



Valley Real Estate

Comprehensive Real Estate Services

Alpaugh 9.72 Acres

Acreage:	9.72 Acres
APN:	311-300-027,028
Location:	Alpaugh, California, Avenue 50 (Olive Street) North side of road. West of Road 22.
Topography:	Flat
Williamson Act:	No
Soil:	Westcamp silt loam, partially drained, 0-2 Percent slopes - Class 3
Zoning:	AE-40
County Use:	Dry Pasture land
Price:	\$21,000

The above information has been obtained from sources deemed reliable, but not guaranteed.

Tom McGuigan • 559-907-0023 • mcguigantom@sbcglobal.net • BRE# 01272021



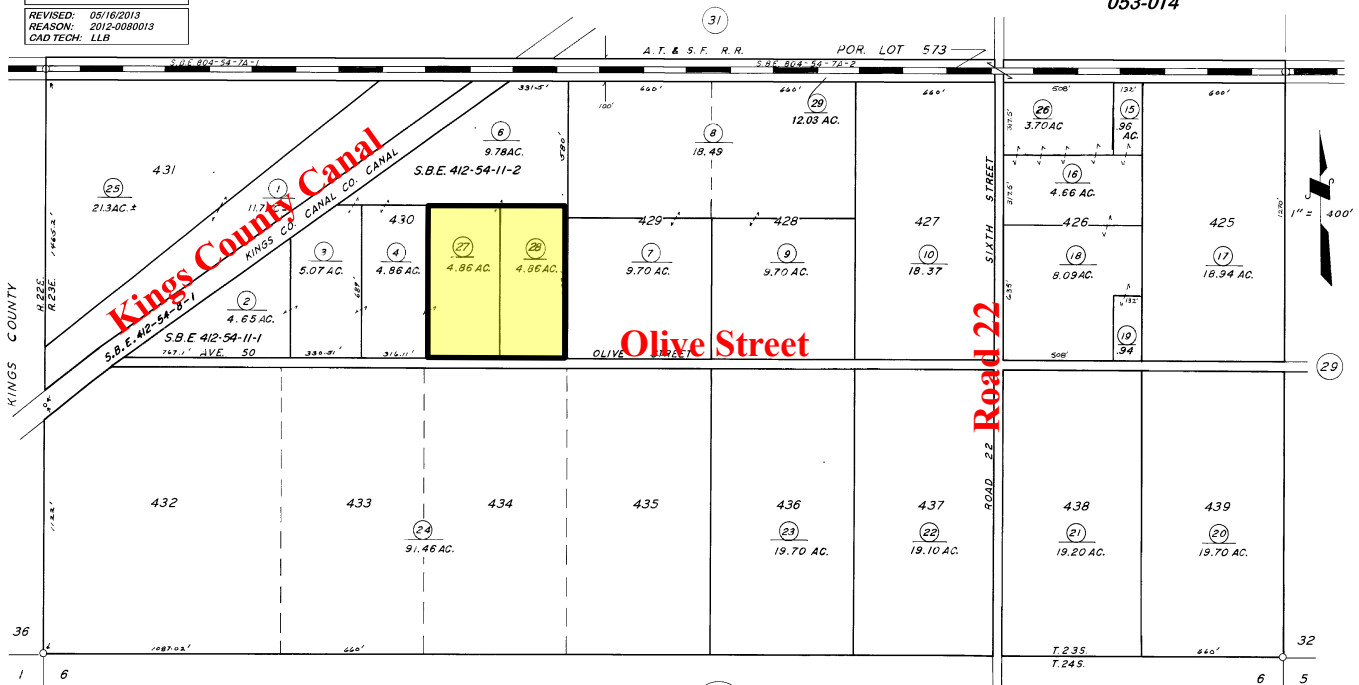
Property Parcel Map

DISCLAIMER
THIS MAP WAS PREPARED FOR LOCAL
PROPERTY ASSESSMENT PURPOSES
ONLY. THE PARCELS SHOWN HEREON
MAY NOT COMPLY WITH STATE AND
LOCAL SUBDIVISION ORDINANCES. NO
LIABILITY IS ASSUMED FOR THE USE
OF THE INFORMATION HEREON.

REVISED: 05/16/2013
REASON: 2012-0080013
CAD TECH: LLB

S 1/2 SEC. 31, T.23S., R.23E., M.D.B. & M.

TAX CODE AREA **311-30**
053-004
053-006
053-013
053-014



POR. SECOND HOME EXTENSION COLONY, R.M. 7-32

VICINITY OF ALPAUGH
ASSESSOR'S MAPS BK. 311, PG. 30.
COUNTY OF TULARE, CALIF.

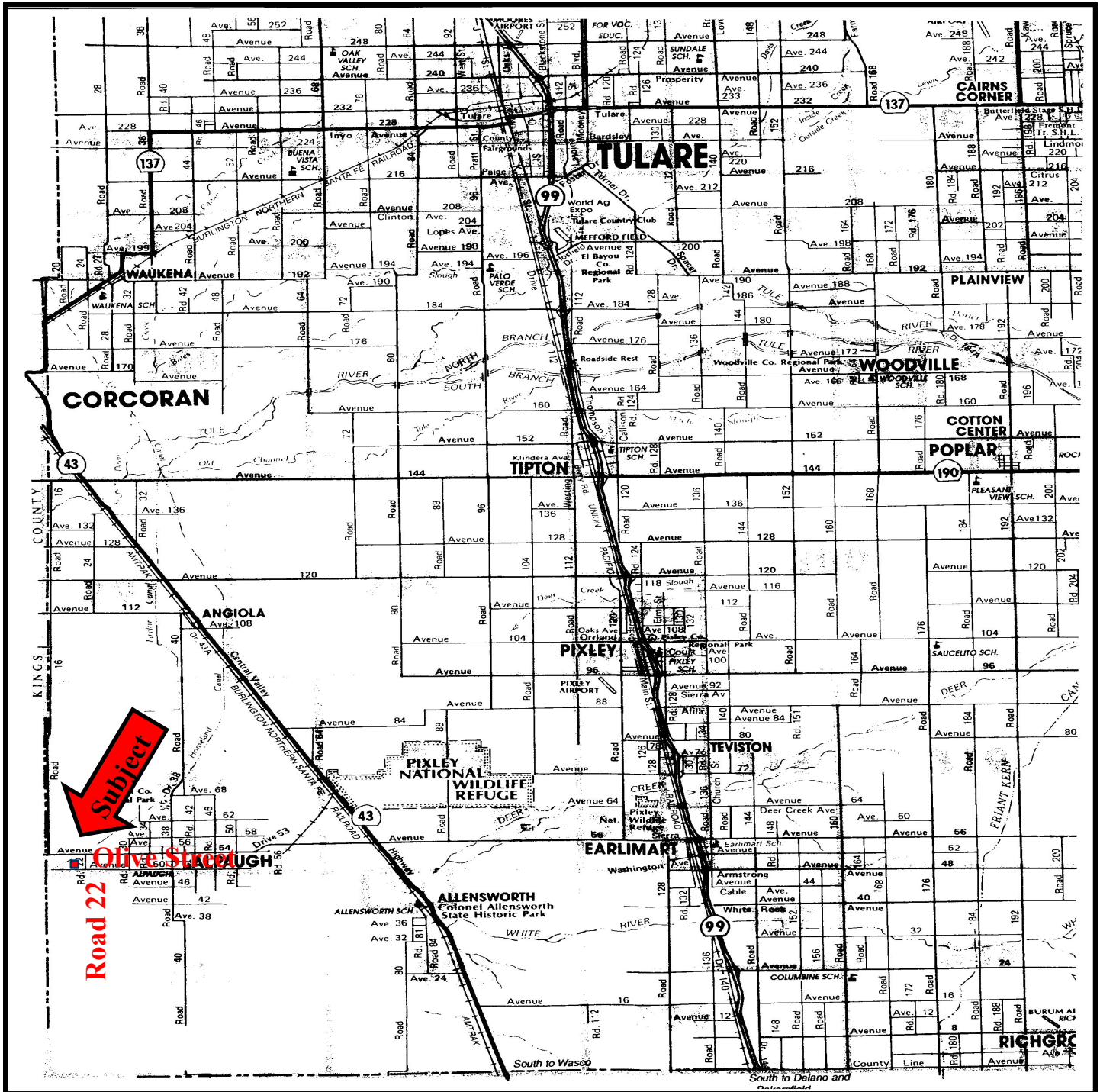
NOTE -- ASSESSOR'S BLOCK NUMBERS SHOWN IN ELLIPSES
ASSESSOR'S PARCEL NUMBERS SHOWN IN CIRCLES

The above information has been obtained from sources deemed reliable, but not guaranteed.

Tom McGuigan • 559-907-0023 • mcguigantom@sbcglobal.net



Location of Property



The above information has been obtained from sources deemed reliable, but not guaranteed.

Tom McGuigan • 559-907-0023 • mcguigantom@sbcglobal.net



Aerial Photo of Property



The above information has been obtained from sources deemed reliable, but not guaranteed.

Tom McGuigan • 559-907-0023 • mcguigantom@sbcglobal.net