



# Valley Real Estate

*Comprehensive Real Estate Services*

## Lemoore 10

|                        |                                                                                                                                                                                                                                                                    |
|------------------------|--------------------------------------------------------------------------------------------------------------------------------------------------------------------------------------------------------------------------------------------------------------------|
| <b>Acreege:</b>        | 10 Acres                                                                                                                                                                                                                                                           |
| <b>APN:</b>            | 024-140-005 - Kings County<br>The property is divided into 8 lots of 1.25 Acres each                                                                                                                                                                               |
| <b>Location:</b>       | This 10 Acre parcel is located on 19th Avenue between Jackson Avenue and Jersey Avenue. The parcel is on the east side of the road, in back of (east of) the Santa Rosa Rancheria Cemetery. The approximate address is: 15301 South 19th Avenue, Lemoore, CA 93245 |
| <b>Topography:</b>     | Flat                                                                                                                                                                                                                                                               |
| <b>Williamson Act:</b> | No                                                                                                                                                                                                                                                                 |
| <b>Soil:</b>           | Boggs sandy loam, partially drained, Class 3<br>Lemoore sandy loam, partially drained, Class 2                                                                                                                                                                     |
| <b>Water:</b>          | Jacob Ranch Water Company managed out of Lemoore Canal & Irrigation Company - 559-924-1246                                                                                                                                                                         |
| <b>Zoning:</b>         | AG-20                                                                                                                                                                                                                                                              |
| <b>County Use:</b>     | Field Crops                                                                                                                                                                                                                                                        |
| <b>Price:</b>          | \$115,000                                                                                                                                                                                                                                                          |

*The above information has been obtained from sources deemed reliable, but not guaranteed.*



# Property Parcel Map

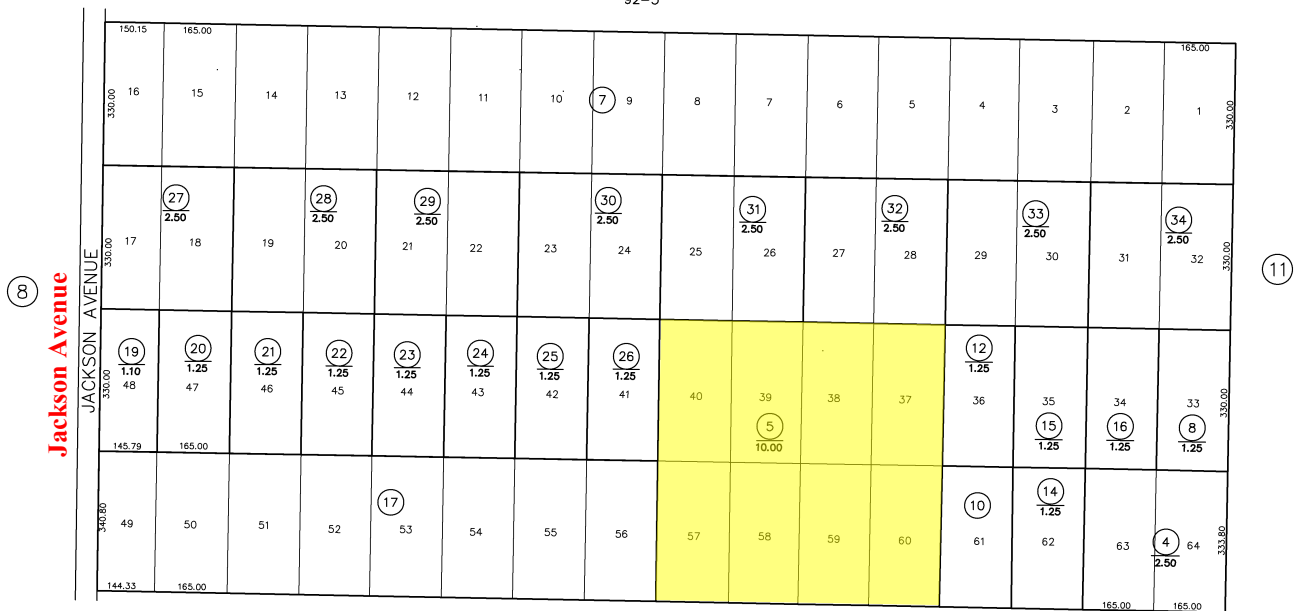
THIS MAP IS FOR ASSESSMENT PURPOSES ONLY  
IT IS NOT TO BE CONSTRUED AS PORTRAYING  
LEGAL OWNERSHIP OF DIVISIONS OF LAND FOR  
PURPOSES OF ZONING OR SUBDIVISION LAW.  
JUNE 2012

## KINGS COUNTY ASSESSOR'S MAP

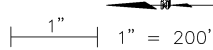
24-14

VAN NESS COMMUNITY ACRES  
E 1/2 OF NW 1/4 SEC. 27-19-20

11  
92-5



Copyright © 1997, Kings County Assessor's Office  
All rights reserved

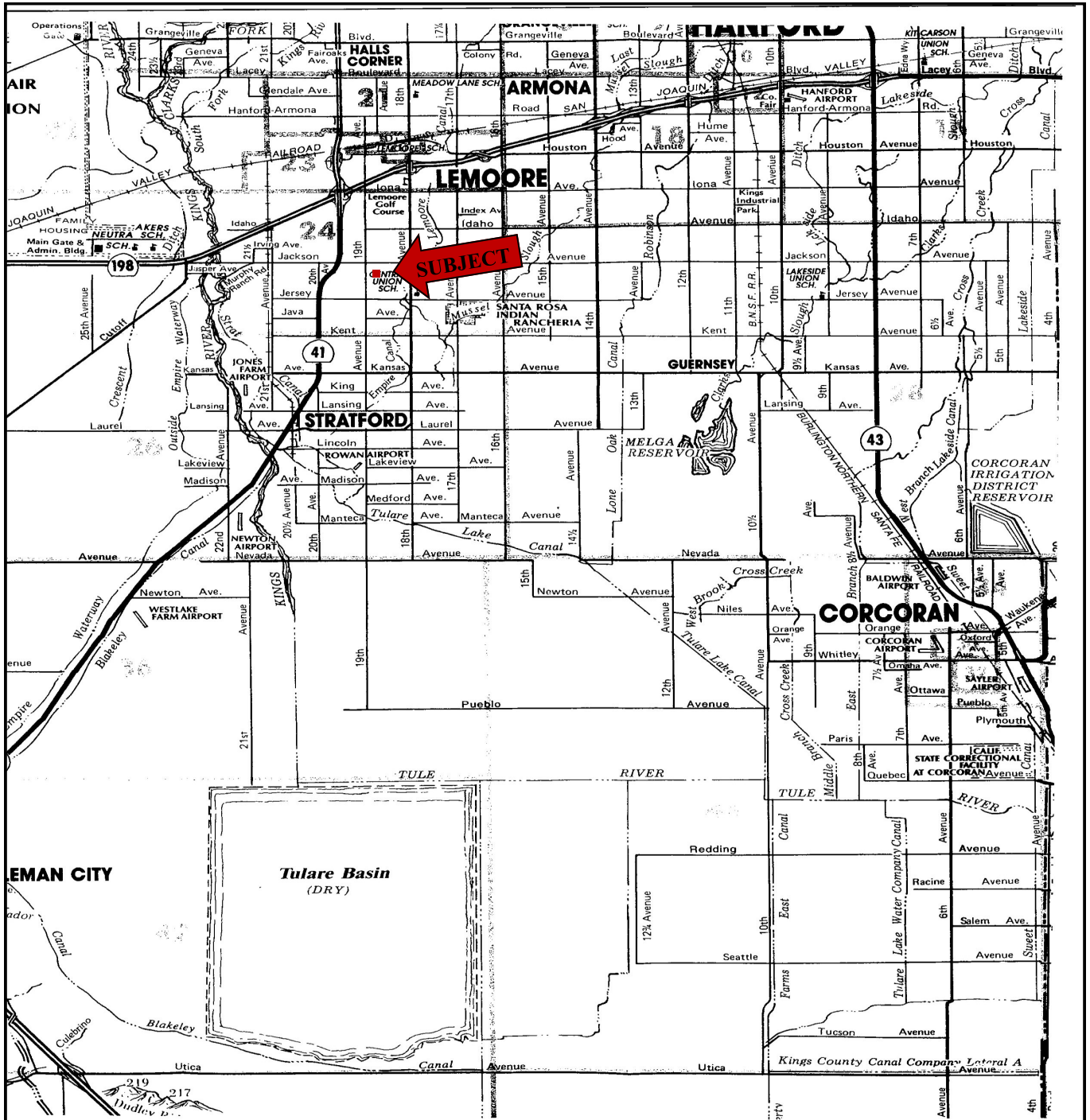


The above information has been obtained from sources deemed reliable, but not guaranteed.

Tom McGuigan • 559-907-0023 • mcguigantom@sbcglobal.net



# Location of Property



*The above information has been obtained from sources deemed reliable, but not guaranteed.*

Tom McGuigan • 559-907-0023 • [mcguigantom@sbcglobal.net](mailto:mcguigantom@sbcglobal.net)



# Aerial Photo of Property



*The above information has been obtained from sources deemed reliable, but not guaranteed.*

Tom McGuigan • 559-907-0023 • [mcguigantom@sbcglobal.net](mailto:mcguigantom@sbcglobal.net)