



Valley Real Estate

Comprehensive Real Estate Services

Stratford 7.57 Acres

Acreage:	7.57
Location:	Stratford, California The property is located on 20th Avenue (Paved Road) 200 yards north of Laurel Avenue
APN:	026-190-026
Topography:	Flat
Soil:	Grangeville sandy loam, saline-alkali, Class 2 Armona loam, partially drained, Class 3
Williamson Act:	No
Zoning:	AG-40
County Use:	Crop land, Field Crops, Row Crops (All Soil Classes)
Price:	\$60,560

The above information has been obtained from sources deemed reliable, but not guaranteed.

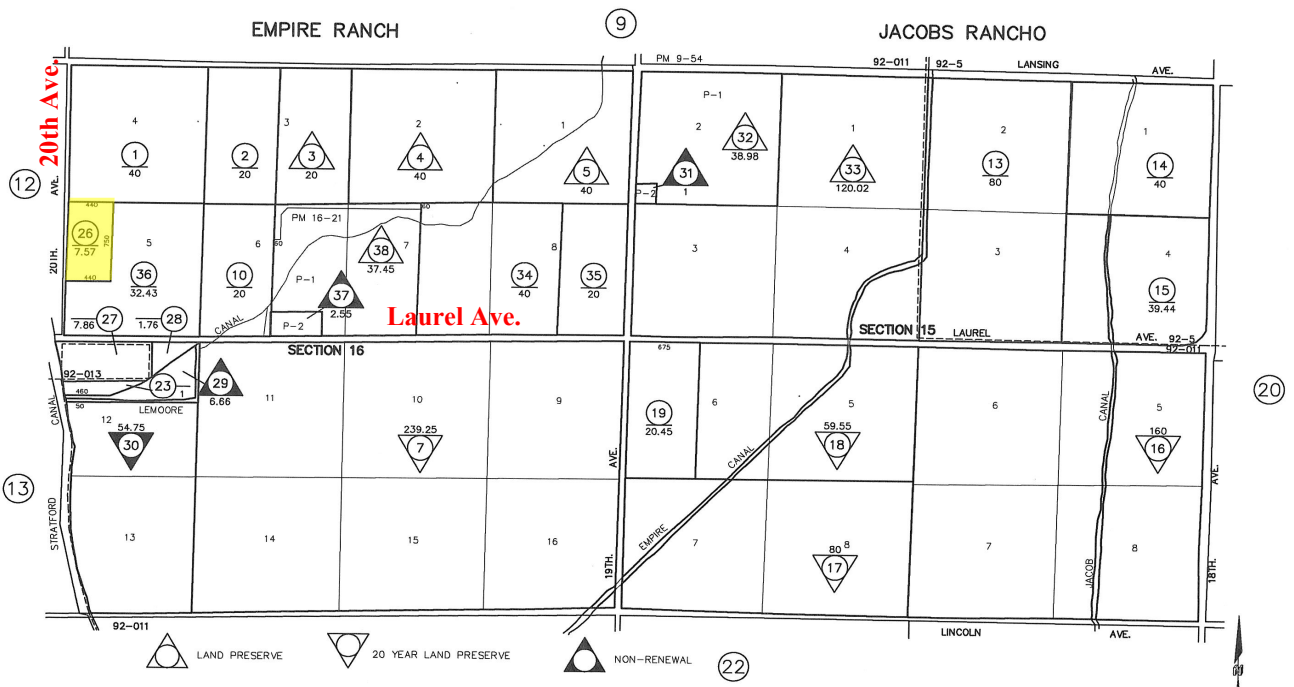


Property Parcel Map

KINGS COUNTY ASSESSOR'S MAP SEC'S 15 & 16-20-20

26-19

THIS MAP IS FOR ASSESSMENT PURPOSES ONLY
IT IS NOT TO BE CONSTRUED AS PORTRAYING
LEGAL OWNERSHIP OF DIVISIONS OF LAND FOR
PURPOSES OF ZONING OR SUBDIVISION LAW.
NOVEMBER 2007



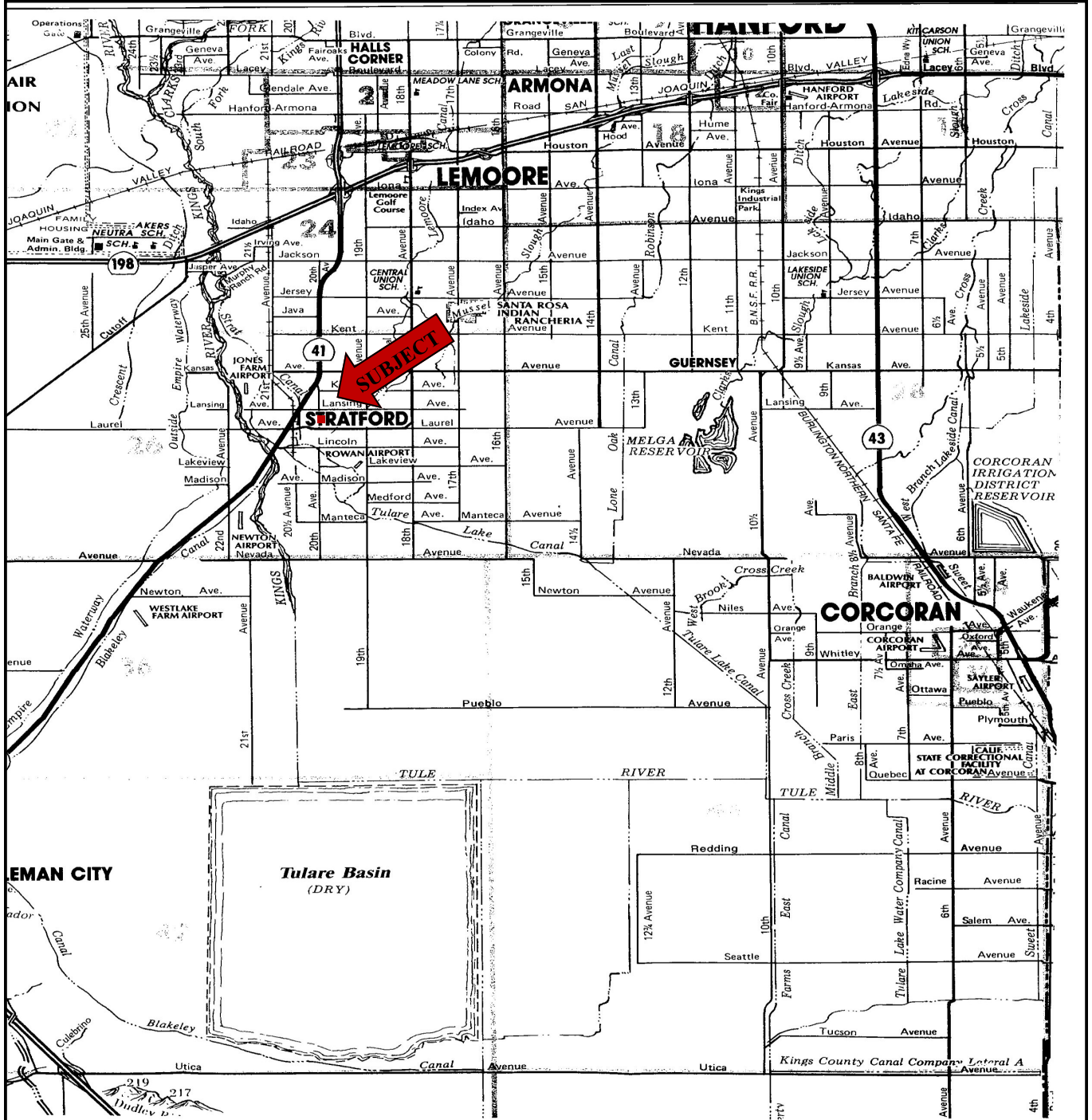
Copyright © 1997, Kings County Assessor's Office
All rights reserved

The above information has been obtained from sources deemed reliable, but not guaranteed.

Tom McGuigan • 559-907-0023 • mcguigantom@sbcglobal.net



Location of Property



The above information has been obtained from sources deemed reliable, but not guaranteed.

Tom McGuigan • 559-907-0023 • mcguigantom@sbcglobal.net



Aerial Photo of Property



The above information has been obtained from sources deemed reliable, but not guaranteed.

Tom McGuigan • 559-907-0023 • mcguigantom@sbcglobal.net