



Valley Real Estate

Comprehensive Real Estate Services

Alpaugh Home with 10 Acres



Acreage:	10 Acres
APN:	330-130-015
Location:	5110 Avenue 46, Alpaugh, CA 93201 East of Road 50
Topography:	Flat
Williamson Act:	
Home:	1,200 Sq Ft., 3 Bedroom, 2 Bathrooms
Soil:	Nahrub silt loam, overwashed, 0 to 1 percent slopes - Class 3
Water District:	Alpaugh Water District For Further Information Call - 559-949-8323
Gas:	Propane
Zoning:	AE-80
County Use:	Field and Row Crop
Price:	\$92,990

The above information has been obtained from sources deemed reliable, but not guaranteed.

Tom McGuigan • 559-907-0023 • mcguigantom@sbcglobal.net • BRE# 01272021



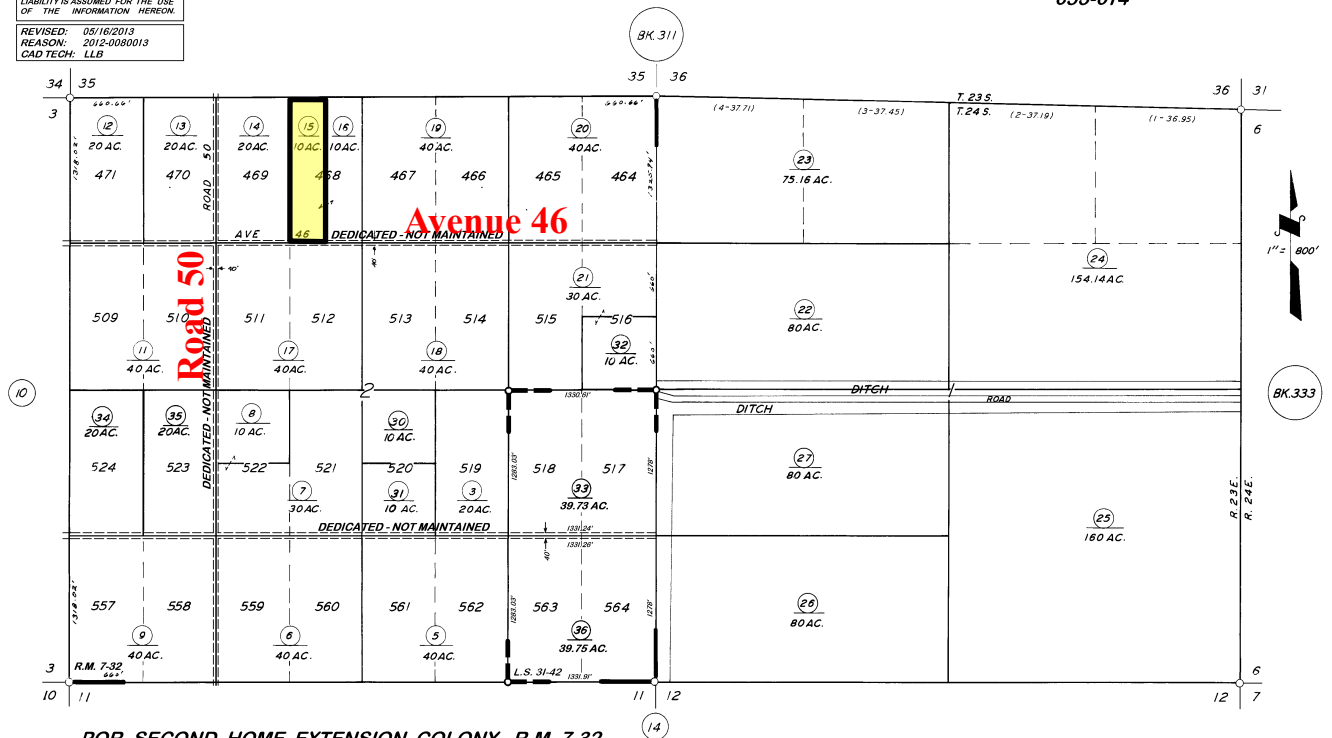
Property Parcel Map

DISCLAIMER
THIS MAP WAS PREPARED FOR LOCAL
PROPERTY ASSESSMENT PURPOSES
ONLY. THE PARCELS SHOWN HEREON
MAY NOT COMPLY WITH STATE AND
LOCAL SUBDIVISION ORDINANCES. NO
LIABILITY IS ASSUMED FOR THE USE
OF THE INFORMATION HEREON.

REVISED: 05/16/2013
REASON: 2012-0080013
CAD TECH: LLB

SEC'S 1 & 2, T.24 S., R.23 E., M.D.B.&M.

TAX CODE AREA **330-13**
053-003
053-013
053-014



POR. SECOND HOME EXTENSION COLONY, R.M. 7-32
RECORD OF SURVEY, L.S. 7-22 (E. LN. SEC. 1)
RECORD OF SURVEY, L.S. 13-77 (ALL SEC.'S 1 & 2)
POR. RECORD OF SURVEY, L.S. 31-42

VICINITY OF ALPAUGH
ASSESSOR'S MAPS BK. 330, PG. 13.
COUNTY OF TULARE, CALIF.

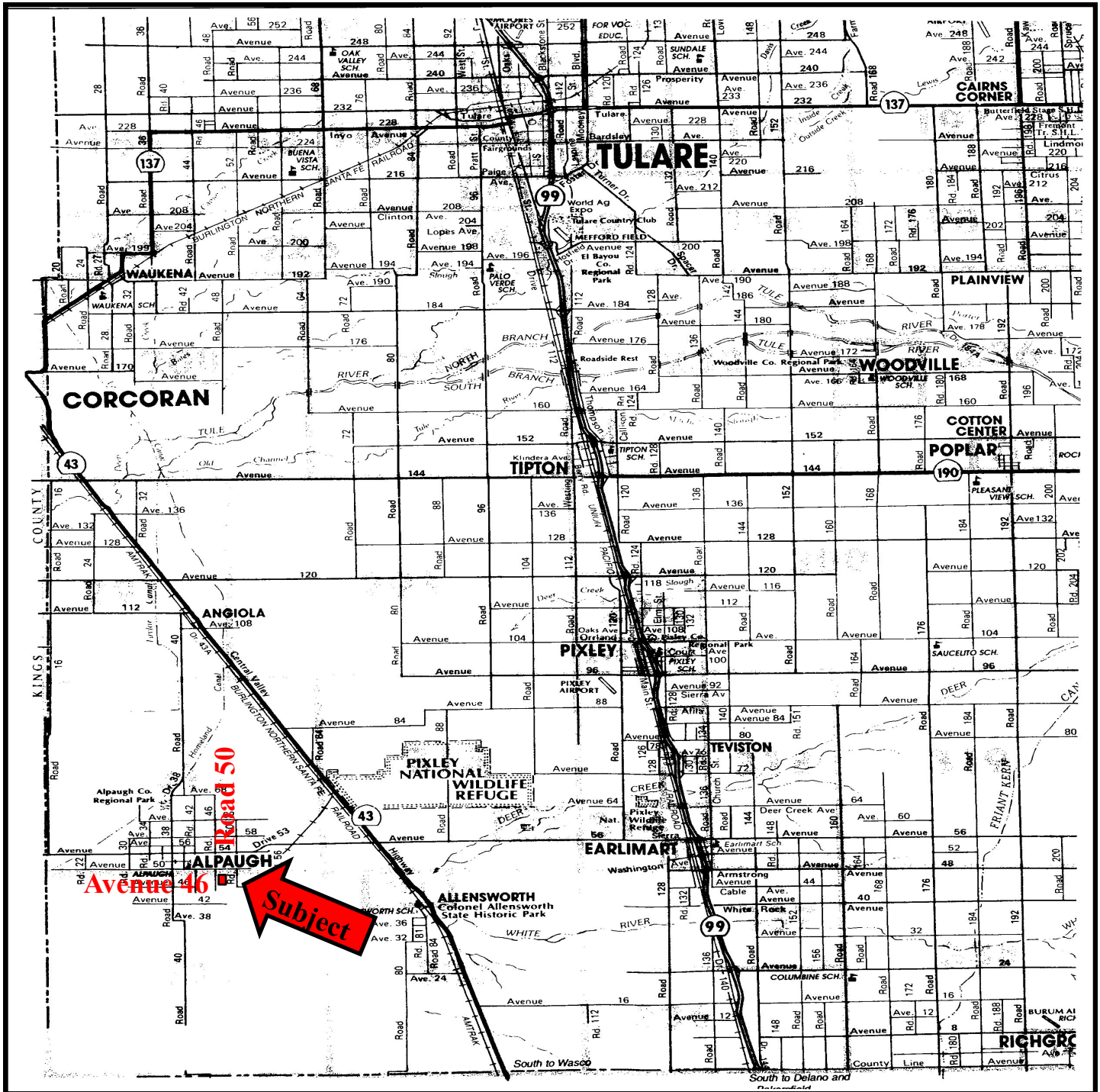
NOTE - ASSESSOR'S BLOCK NUMBERS SHOWN IN ELLIPSES
ASSESSOR'S PARCEL NUMBERS SHOWN IN CIRCLES

The above information has been obtained from sources deemed reliable, but not guaranteed.

Tom McGuigan • 559-907-0023 • mcguigantom@sbcglobal.net



Location of Property



The above information has been obtained from sources deemed reliable, but not guaranteed.

Tom McGuigan • 559-907-0023 • mcguigantom@sbcglobal.net



Aerial Photo of Property



The above information has been obtained from sources deemed reliable, but not guaranteed.

Tom McGuigan • 559-907-0023 • mcguigantom@sbcglobal.net