



# Valley Real Estate

Comprehensive Real Estate Services

## Alpaugh 4.66 Acres

**Acreage:** 4.66 Acres

**APN:** 311-300-016

**Location:** Alpaugh, California, East side of Road 22  
1/3 mile South from Center St (Avenue 54)

**Topography:** Flat

**Williamson Act:** No

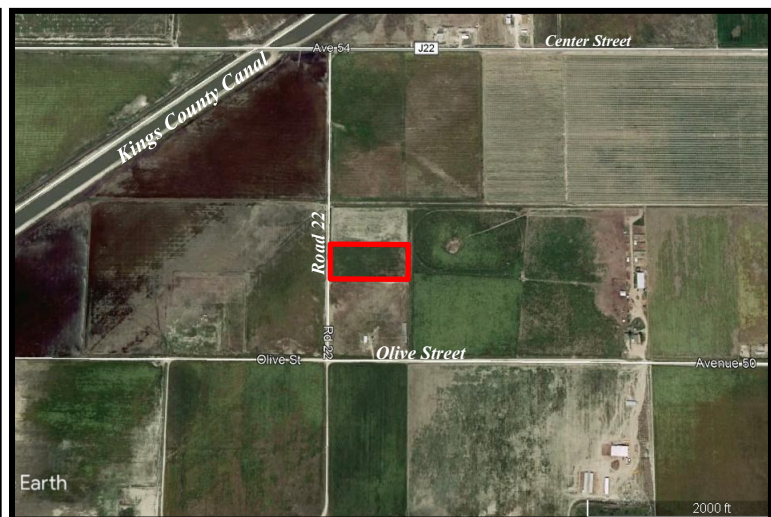
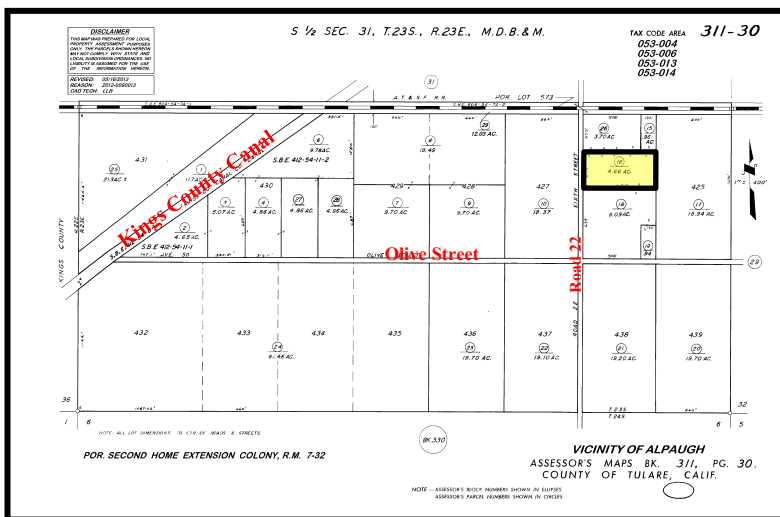
**Soil:** Westcamp silt loam, partially drained, 0-2  
Percent slopes - Class 3

**Water District:** Alpaugh Water District  
For Further Information Call - 559-949-8323

**Zoning:** AE-40

**County Use:** Dry Pasture land

**Price:** \$25,000



The above information has been obtained from sources deemed reliable, but not guaranteed.

Tom McGuigan • 559-907-0023 • mcguigantom@sbcglobal.net • BRE# 01272021



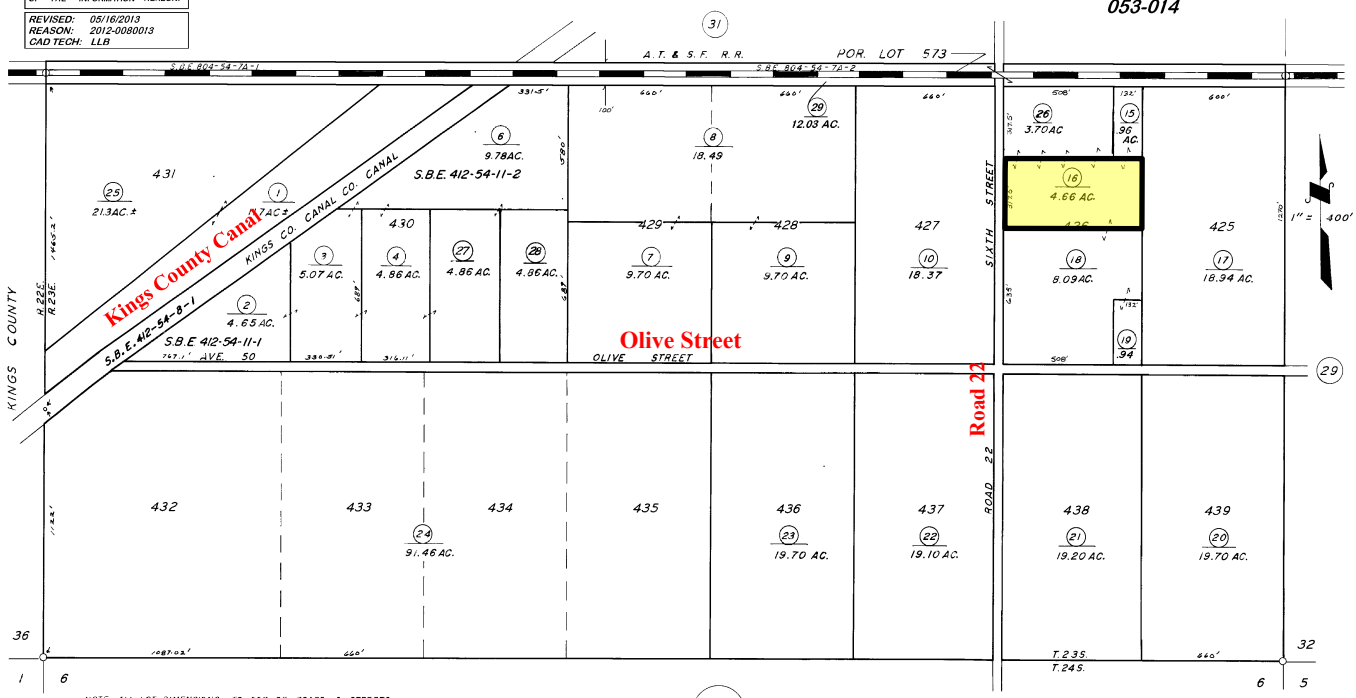
# Property Parcel Map

**DISCLAIMER**  
 THIS MAP WAS PREPARED FOR LOCAL PROPERTY ASSESSMENT PURPOSES ONLY. THE PARCELS SHOWN HEREON MAY NOT COMPLY WITH STATE AND LOCAL SUBDIVISION ORDINANCES. NO LIABILITY IS ASSUMED FOR THE USE OF THE INFORMATION HEREON.

REVISED: 05/16/2013  
 REASON: 2012-0080013  
 CAD TECH: LLB

S 1/2 SEC. 31, T.23S., R.23E., M.D.B. & M.

TAX CODE AREA **311-30**  
 053-004  
 053-006  
 053-013  
 053-014



NOTE: ALL LOT DIMENSIONS TO CTR OF ROADS & STREETS.

POR. SECOND HOME EXTENSION COLONY, R.M. 7-32

BK.330

**VICINITY OF ALPAUGH**  
 ASSESSOR'S MAPS BK. 311, PG. 30.  
 COUNTY OF TULARE, CALIF.

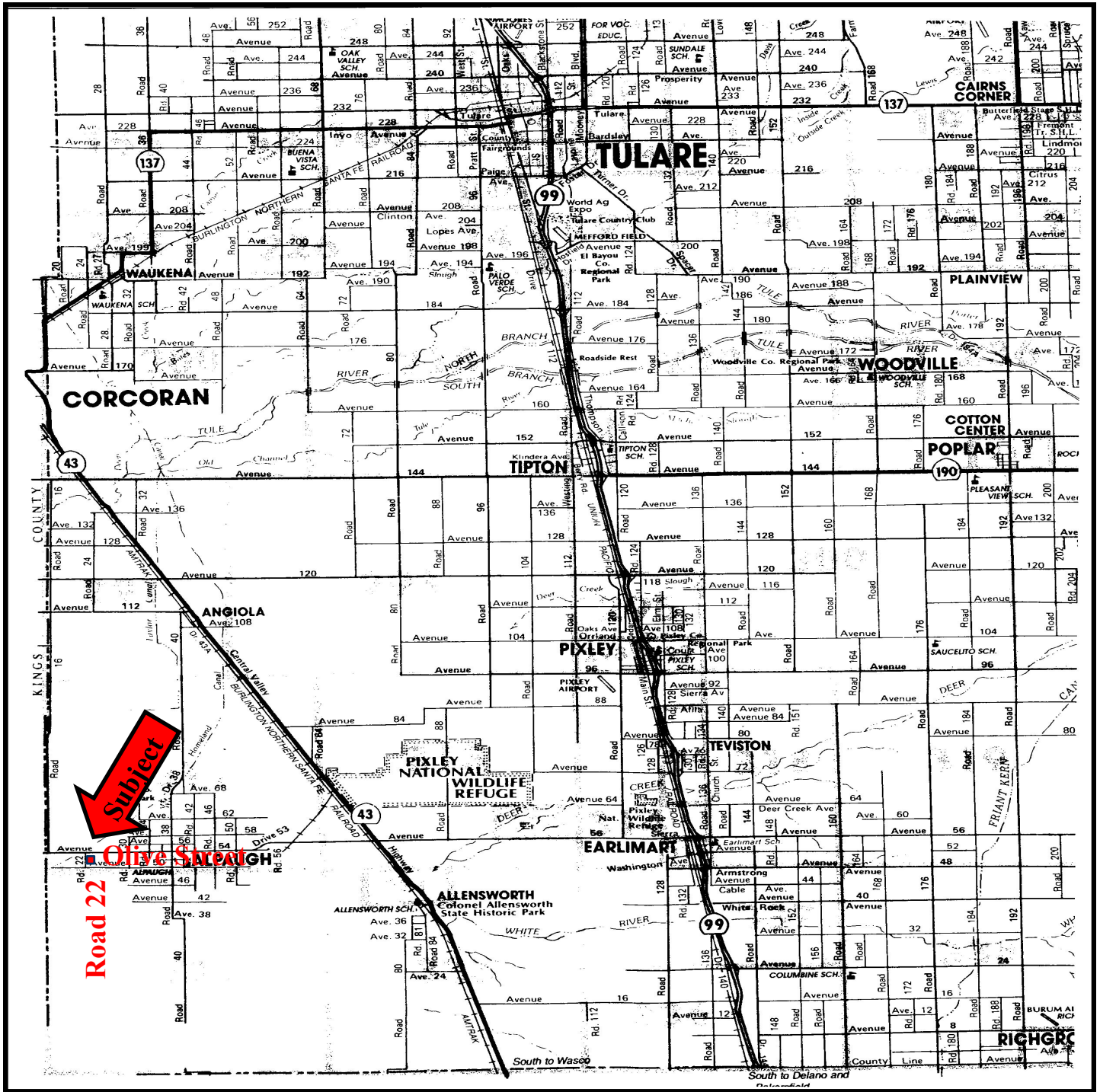
NOTE -- ASSESSOR'S BLOCK NUMBERS SHOWN IN ELLIPSES  
 ASSESSOR'S PARCEL NUMBERS SHOWN IN CIRCLES

The above information has been obtained from sources deemed reliable, but not guaranteed.

Tom McGuigan • 559-907-0023 • mcguigantom@sbcglobal.net



# Location of Property

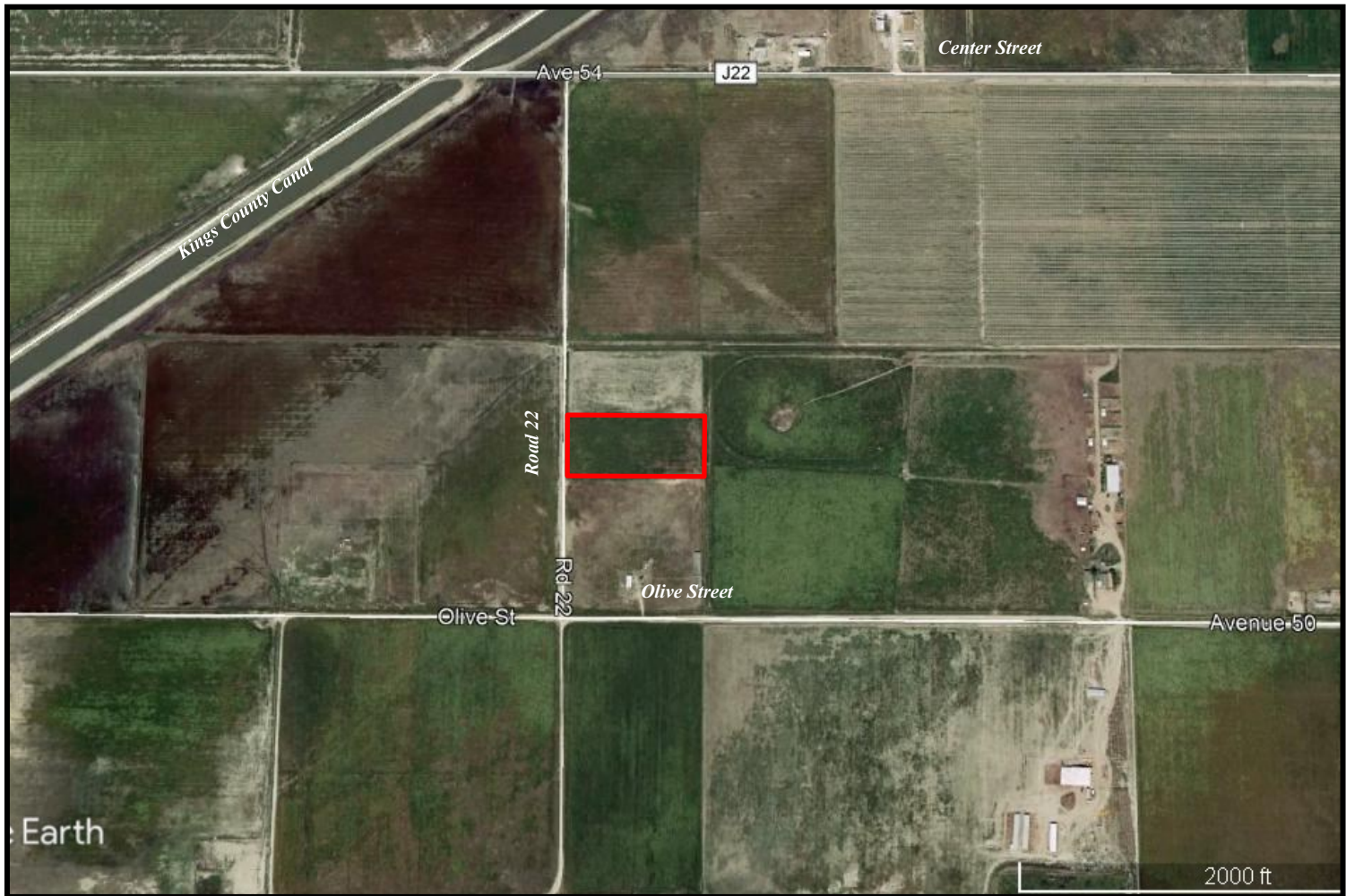


The above information has been obtained from sources deemed reliable, but not guaranteed.

Tom McGuigan • 559-907-0023 • mcguigantom@sbcglobal.net



# Aerial Photo of Property



*The above information has been obtained from sources deemed reliable, but not guaranteed.*

Tom McGuigan • 559-907-0023 • [m McGuigantom@sbcglobal.net](mailto:m McGuigantom@sbcglobal.net)