



# Valley Real Estate

Comprehensive Real Estate Services

## Alpaugh 10 Acres

**Acreage:** 10 Acres

**APN:** 330-130-016

**Location:** Alpaugh, California, North side of Avenue 46  
Just East of Road 50

**Topography:** Flat

**Williamson Act:** No

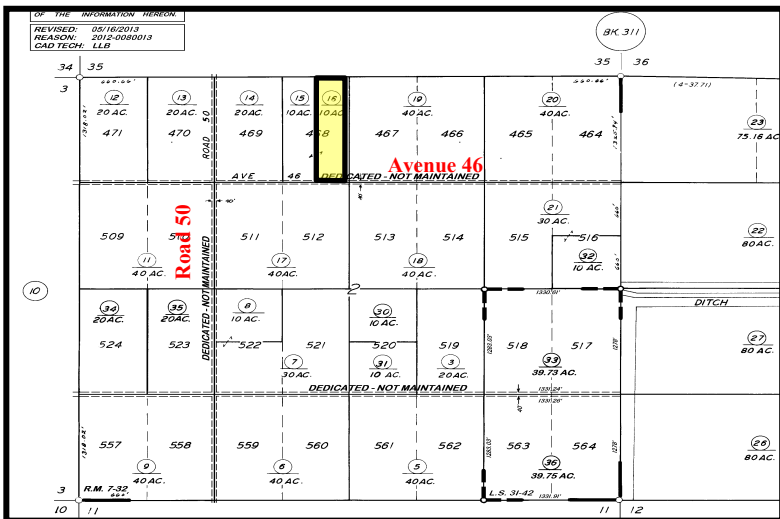
**Soil:** Nahrub silt loam, overwashed,  
0 to 1 percent slopes - Class 3

**Water District:** Alpaugh Water District  
For Further Information Call - 559-949-8323

**Zoning:** AE-80

**County Use:** Field and Row Crop

**Price:** \$42,000



The above information has been obtained from sources deemed reliable, but not guaranteed.

Tom McGuigan • 559-907-0023 • mcguigantom@sbcglobal.net • BRE# 01272021



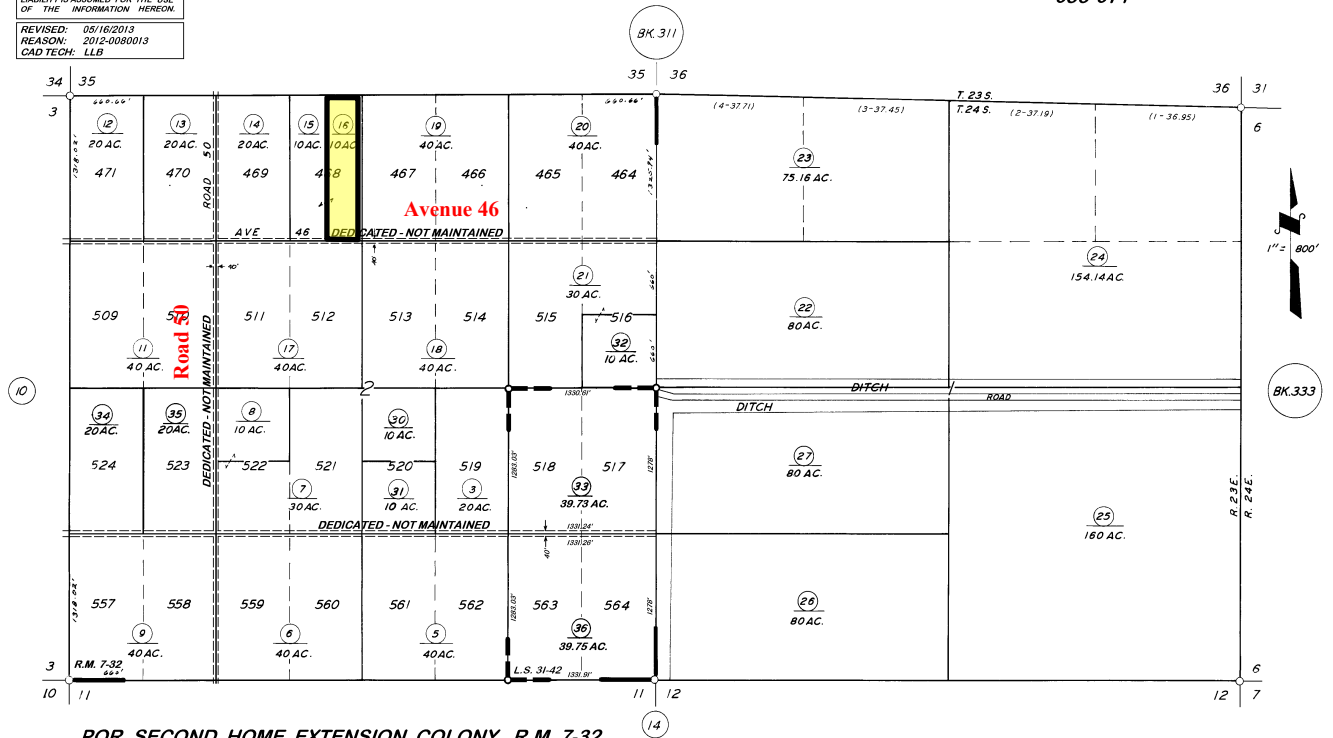
# Property Parcel Map

**DISCLAIMER**  
 THIS MAP WAS PREPARED FOR LOCAL PROPERTY ASSESSMENT PURPOSES ONLY. THE PARCELS SHOWN HEREON MAY NOT COMPLY WITH STATE AND LOCAL SUBDIVISION ORDINANCES. NO LIABILITY IS ASSUMED FOR THE USE OF THE INFORMATION HEREON.

REVISED: 05/16/2013  
 REASON: 2012-0080013  
 CAD TECH: LLB

SEC'S 1 & 2, T.24S., R.23E., M.D.B.&M.

TAX CODE AREA **330-13**  
**053-003**  
**053-013**  
**053-014**



POR. SECOND HOME EXTENSION COLONY, R.M. 7-32  
 RECORD OF SURVEY, L.S. 7-22 (E. LN. SEC. 1)  
 RECORD OF SURVEY, L.S. 13-77 (ALL SEC.'S 1&2)  
 POR. RECORD OF SURVEY, L.S. 31-42

**VICINITY OF ALPAUGH**  
 ASSESSOR'S MAPS BK. 330, PG. 13.  
 COUNTY OF TULARE, CALIF.

NOTE - ASSESSOR'S BLOCK NUMBERS SHOWN IN ELLIPSES  
 ASSESSOR'S PARCEL NUMBERS SHOWN IN CIRCLES

*The above information has been obtained from sources deemed reliable, but not guaranteed.*

Tom McGuigan • 559-907-0023 • mcguigantom@sbcglobal.net





# Aerial Photo of Property



*The above information has been obtained from sources deemed reliable, but not guaranteed.*

Tom McGuigan • 559-907-0023 • [mcguigantom@sbcglobal.net](mailto:mcguigantom@sbcglobal.net)